
ENGIE and Selma-Kingsburg-Fowler Photovoltaic and Battery Storage Project

Year 2 - Guarantee Report



Project Overview

Solar PV

- Guaranteed Savings Program for 5 Years beginning March 1, 2019
- Daily Monitoring and Annual Maintenance Services

Battery Storage System

- Guaranteed Savings Program for 5 Years beginning March 1, 2019
- Daily Monitoring and Annual Maintenance Services

Lighting Efficiency Retrofits

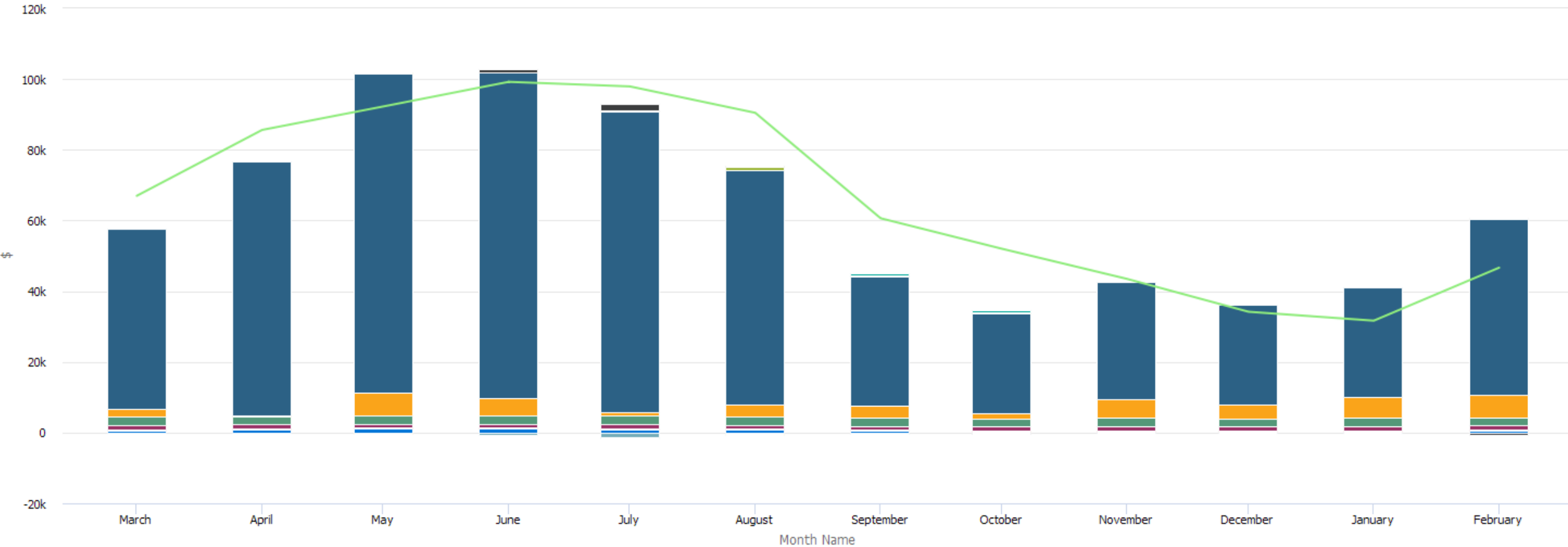
HVAC Retrofits

SGIP Rebates

- 5 Years of rebates totaling \$494,480
- Guaranteed \$49,448 in Year 2. Received \$27,974.

Overall Project Results

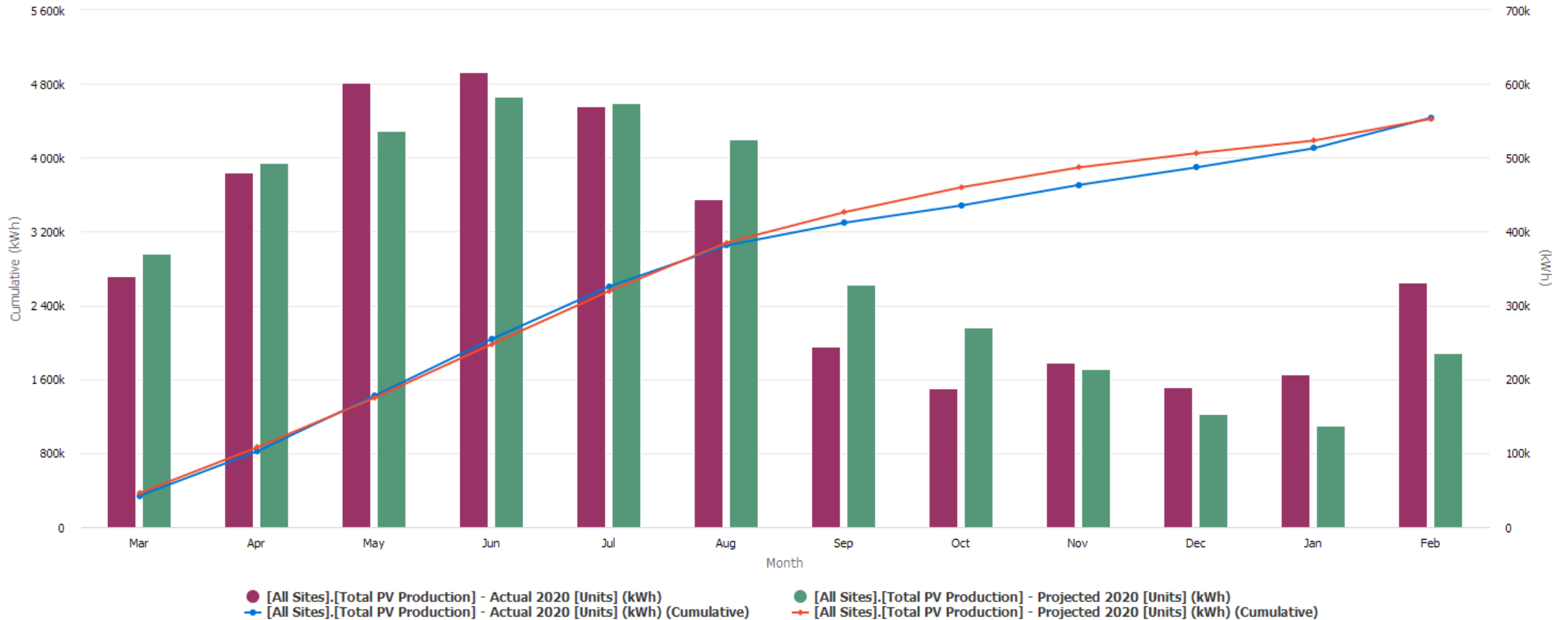
\$763,434 (actual savings) vs. \$801,028 (adjusted guaranteed savings) = **95.3%**



- Administration.PV Production (\$)
- South WWTP.Maximum Demand kW Savings (\$)
- South WWTP.Summer Part Peak kW Savings (\$)
- South WWTP.Winter Part Peak kW Savings (\$)
- All Sites.HVAC Retrofit Savings (\$)
- South WWTP.PV Production (\$)
- South WWTP.Summer Part Peak kWh Savings (\$)
- South WWTP.Winter Part Peak kWh Savings (\$)
- All Sites.Lighting Savings (\$)
- South WWTP.Summer Max Peak kW Savings (\$)
- South WWTP.Summer Peak kWh Savings (\$)
- All Sites.SGIP Incentive (\$)
- South WWTP.Summer Off Peak kWh Savings (\$)
- South WWTP.Winter Off Peak kWh Savings (\$)
- Guaranteed Savings (\$)

Solar Photovoltaic Systems Performance

4,432,969 kWh (actual prod) vs. 4,420,961 kWh (adjusted guaranteed prod) = **100.3%**



Solar Photovoltaic Systems O&M

2020 Scheduled Maintenance

Electrical PM: May 18

Panel Washing: August 3

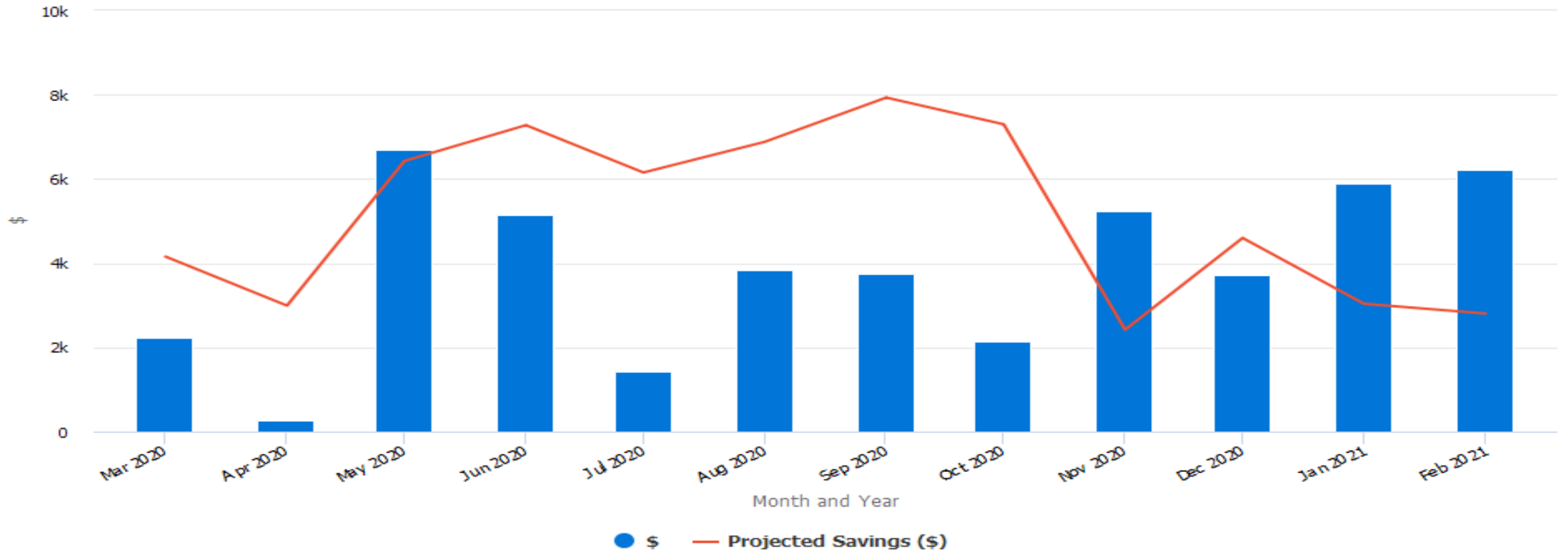
2020 Operational Issues or System Failures/Repairs

Minor warranty repairs performed in Year 2 including two inverter repairs, a combiner box channel failure and three tracker part failures that resulted in portions of the systems to be offline for short periods of time.

The fires that occurred in August – October 2020 also affected solar production.

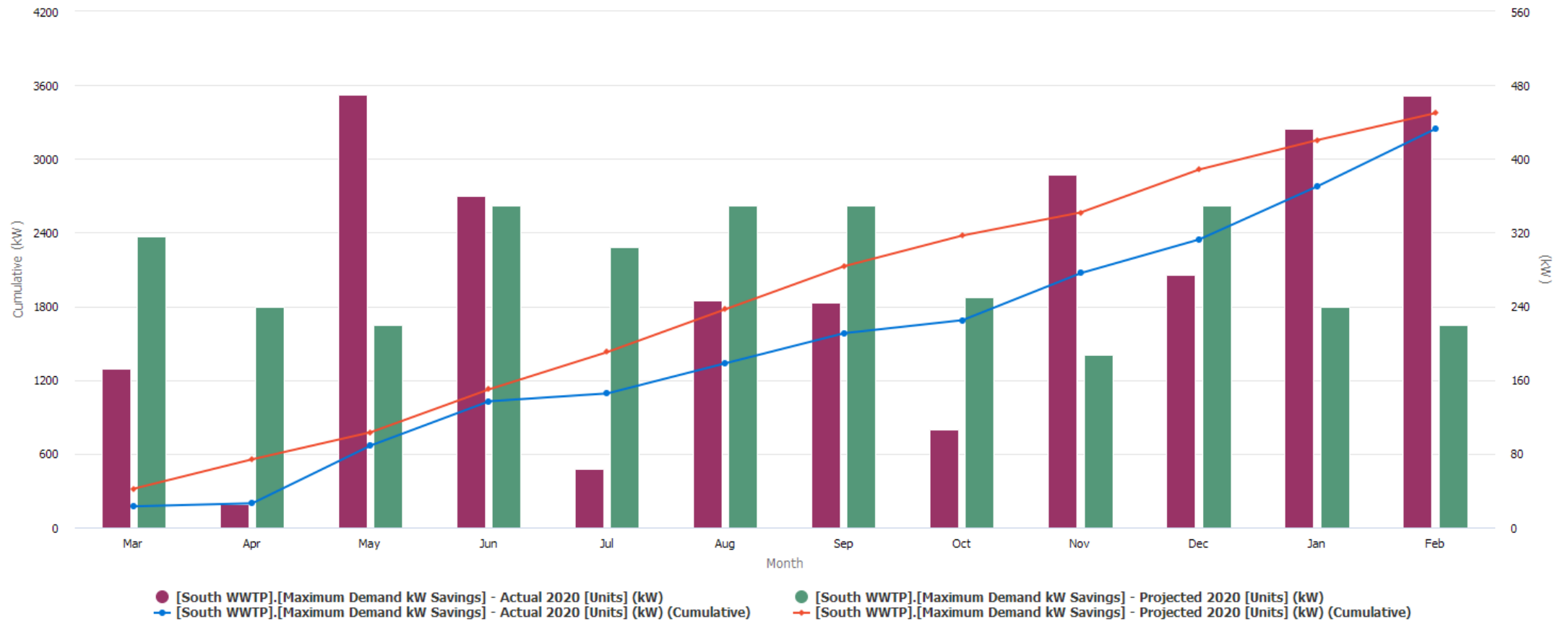
Battery Storage System Performance

\$46,606 (actual savings) vs. \$64,454 (projected savings) = **72.2%**



Battery Storage System Performance

2,604 kW (actual reduction) vs. 3,373 kW (projected reduction) = **77.2%**



Battery Storage System Performance O&M

2020 Scheduled Maintenance

Routine maintenance was performed during repair visits (see below)

2020-2021 Operational Issues or System Failures/Repairs

May 6-Jun 12: Lost communications. Reset and restored communications. Offline 36 days.

Oct 15 - Nov 6: Minnowboard faulted. Reset and restored to operation. Offline 22 days.

Feb 13 - Mar 1: Battery Side A faulted due to sensing cable shorting. Replaced contactor and wire assembly and restored to operation. Offline 16 days.

Feb 28 - Mar 1: Voltage imbalance alarm. Replaced sensing cable and restored to operation. Offline 3 days.



Thank You