



Selma-Kingsburg-Fowler County Sanitation District 2016 Strategic Plan



Board Members:

Chairman David Cárdenas
Vice-Chair Buddy Mendes
Michelle Roman
Yvette Montijo
Henry Perea

General Manager:

Ben Muñoz, Jr.

Facilitator:

Dr. Jacqueline Ryle

Date Adopted: July 14, 2016

TABLE OF CONTENTS

Letter of Introduction	1
District Overview	2
District Service Area	4
Vision	5
Mission	5
Values	5
Beliefs	7
Goals and Objectives	8
Future Planning	12
Appendices:	
Appendix A: District Service Area.....	14
Appendix B: Wastewater Treatment & Disposal Facility	15
Appendix C: Organizational Chart.....	16



Committed to our communities. Protecting tomorrow's water resources by treating today's wastewater through innovation and superior level of service.



SELMA - KINGSBURG - FOWLER
COUNTY SANITATION DISTRICT

DIRECTORS
David Cárdenas, Chairman
Buddy Mendes, Vice-Chairman
Henry Perea
Yvette Montijo
Michelle Roman

STAFF
Ben Muñoz, Jr., General Manager

July 14, 2016

Letter of Introduction

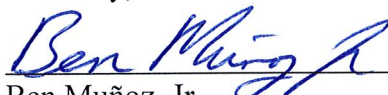
The Board of Directors of the Selma-Kingsburg-Fowler County Sanitation District (District or S-K-F CSD) is pleased to present this Strategic Plan to the partner cities and residents of the District's service area. This document is a blueprint for how the District will plan and respond to future challenges. It outlines the specific goals and objectives the District will pursue to move it forward and establishes a set of criteria to measure its progress. This Strategic Plan reaffirms the District's vision, mission, values and beliefs as a public agency dedicated to a superior level of service.

The District's first Strategic Plan was developed by District management and adopted by the Board on October 11, 2012. It took many months for the first plan to develop and take shape. Early this year, the Board decided it was time to update the Strategic Plan to take into account changing goals and objectives.


There was unanimous concurrence that the Strategic Plan is an organic working document which will be in continual use, with provisions for regular reassessment of both immediate and long range interests and issues, and will be both fluid and flexible in accommodating the recommendations of the adopted Sewer Master Plan.

The Board acknowledges that the District has a state-of-the-art sewer collection, maintenance, and treatment system providing cost effective services to its partner cities. Its mission is clear, direct, and solid. The District takes full responsibility for complying with all discharge requirements in order to protect public health and the environment. The District balances its daily operations and maintenance needs versus long-term rehabilitation and expansion, taking into consideration the needs of the partner cities and their future growth. Continuously striving for excellence has made the District recognized, well known, and well respected throughout California.

Sincerely,



Ben Muñoz, Jr.
General Manager



David Cárdenas
Board Chairman

MAILING ADDRESS: P.O. Box 158, Kingsburg, CA 93631-0158 SHIP TO: 11301 E. Conejo Ave., Kingsburg, CA 93631-9511
PHONE (559) 897-6500 FAX (559) 897-1985
website: www.skfcsd.org

District Overview

The Selma-Kingsburg-Fowler County Sanitation District is located in Fresno County. The District collects, treats and disposes wastewater originating from the residential, commercial, institutional and industrial dischargers from the three member cities and parts of unincorporated Fresno County. The District operates and maintains the wastewater treatment plant and the sewer collection system. The District refurbishes and replaces each city's facilities. The member cities own the local sewer collection system, which includes sewers, lift stations, and appurtenances not owned by the District. Each member city is responsible for expanding the facilities that it owns. The District serves an estimated population of 40,000.

The 1970 Master Plan Study for Sewage Disposal prepared by the County of Fresno called for a South Fresno County Regional Sewage Treatment Plant. The Regional Sewerage Report prepared for the communities of Selma, Kingsburg and Fowler proposed the formation of the Selma-Kingsburg-Fowler County Sanitation District and contained a plan for the orderly development of the sewerage facilities.

The S-K-F CSD is a public agency formed in February 1971 by the Fresno County Board of Supervisors through authority granted in the County Sanitation Districts Act and the Health and Safety Code of the State of California. The purpose of this special district is to provide for the collection, treatment and disposal of wastewater emanating from the residential, commercial, institutional and industrial dischargers within the service area. The S-K-F CSD Board of Directors consist of the mayors of each of the three cities, the chairman of the Fresno County Board of Supervisors and the Fresno County supervisor from District 4.

A three-year construction project substantially financed through the Federal Clean Water Act was completed in 1974. It built the treatment plant and some of the sludge and effluent disposal area. The 1974 project also constructed sewer interceptors and pump stations to transport wastewater from the three cities to the treatment plant.

A four-year construction project was completed in 1983. It, too, was substantially financed through the Federal Clean Water Act. The 1983 project modified the treatment plant to correct deficiencies in the original design and to expand sludge disposal and laboratory facilities.

Additional locally-funded construction included sludge and effluent disposal facilities, maintenance shops, and offices.

Strategic Plan

Supervisors and Asst. Supervisors



Administration & Engineering



Laboratory



Operations



Collections and Maintenance



General Manager



District Service Area

The District's service area is 7,173 acres and the sphere of influence is 17,330 acres (see Appendix A, Fresno Local Agency Formation Commission, S-K-F CSD Map).

The wastewater treatment and disposal facilities are located on a 550 acre site 1 ½ miles west of Kingsburg. Appendix B shows 30 acres consisting of the operations, maintenance, and administration buildings along with the treatment process units. Percolation-evaporation ponds take up about 120 acres. The remaining land is part of the environmental buffer land and it is mostly in agricultural use.



Vision

Water in the Selma-Kingsburg-Fowler County Sanitation District service area is available for reuse due to the innovative treatment and highest quality service by the District.

Mission

The Mission of the Selma-Kingsburg-Fowler County Sanitation District is to collect, treat and dispose wastewater for partner cities and entities.

Values

Trust and Confidence (in District and in Staff)

- Inspired by reliable, competent, 24/7 service capability
- Transparency of operation
- Effective communication
- Depth of knowledge
- Credibility
- Positive professional image
- Regional recognition as Model of Excellence

Quality Service

- For customers
- Well maintained equipment
- 24-7 service capacity/accessibility
- Cost effectiveness and efficiency



Customer Satisfaction

Inspired and fostered by all other values and beliefs
Caring for all stakeholders, internal and external
Responsiveness to partner cities and entities
Respectful consideration and interaction among stakeholders
Engaged communities/community outreach

Valued Staff and Relationships

Investment in knowledgeable, well trained, and highly supported staff at all levels
Identified, accessible and accessed opportunity

Reliability and Stability

Service and information that are fair, consistent, and accessible
Financial, operational and programmatic stability

Professional Leadership

In all aspects of collect, treat and dispose

Collaboration Among all Stakeholders



Beliefs

Committed to our communities by providing adequate capacity, conveyance, treatment and disposal.

Provide a proactive leadership role in creative wastewater management and development of innovative technology for improving efficiencies.

Provide a regional resource for training, outreach, and education.

Provide a workplace where each individual is treated with respect, courtesy, professionalism, and loyalty.

Provide a safe and healthy environment through training and safety incentives.

Provide superior service to our communities responsibly, consistently, and efficiently to safely sustain our water resources.



All the Water there is...
Is all the water there ever was...



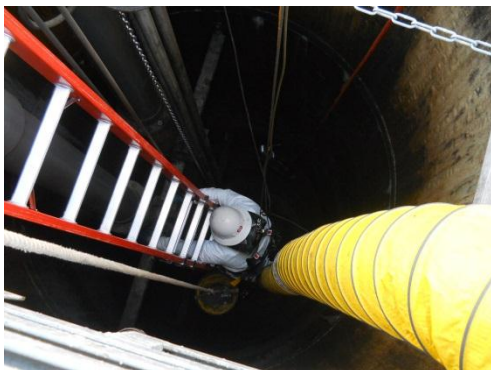
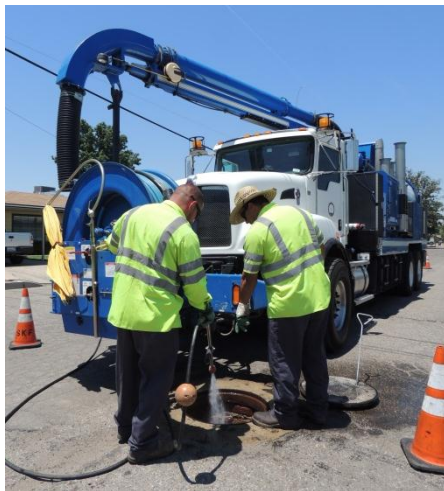
Author Unknown

Goals and Objectives

Goal #1: Successful achievement of core function to collect, treat and dispose wastewater

Objective A: Sewer Master Plan is complete, approved and operational by specific date (to be determined during regular Board meeting)

Objective B: Develop and implement mechanism for interaction and communication among all partners in place by date to be determined by the Board

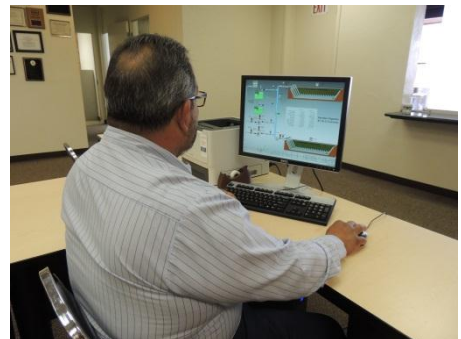


Goal #2: Sustain Financial Health

Objective A: Develop formal process for collaboration among entities to seek revenue/financial resources (by date to be determined)

Objective B: Evaluate reserves: determine and set policy for appropriate level

Objective C: Stay current with appropriate, competitive and viable fee level



Goal #3: Effective Outreach and Collaboration with Communities and Entities

Objective A: Establish ad hoc task force to explore collaborative opportunities for financial resources

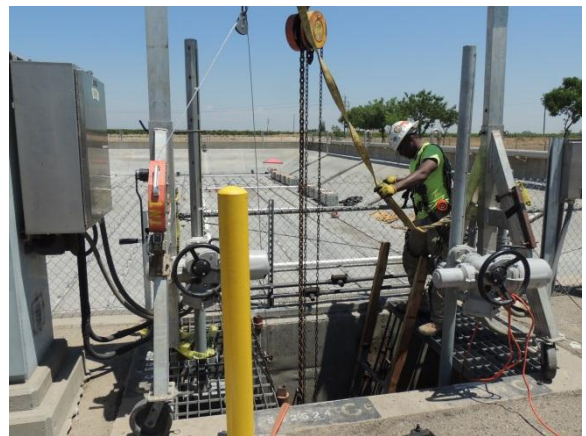
Objective B: Design and implement an effective social media presence, using existing and expanded website, and all other forms to reach wide range of populations (i.e., schools)



Goal #4: Long-Term Sustainability for Future Growth and Expansion

Objective A: Explore possibility of encompassing Manning Corridor, including costs, benefits, opportunities for recycle, etc.

Objective B: Explore Solar/Energy Management, including costs, savings, benefit, etc.



Future Planning

A key part of the strategic planning process is to conduct a quarterly review to evaluate movement towards achieving the goals and objectives of the Plan. These reviews will allow for regular maintenance of the Plan so that it reflects the actual progress and conditional needs of the District. The reviews will be documented and followed up with by either a Plan supplement or an updated Plan. A three-year planning horizon will be maintained, with each review effort developing a new third year of programs and initiatives.



APPENDICES

Appendix A

District Service Area

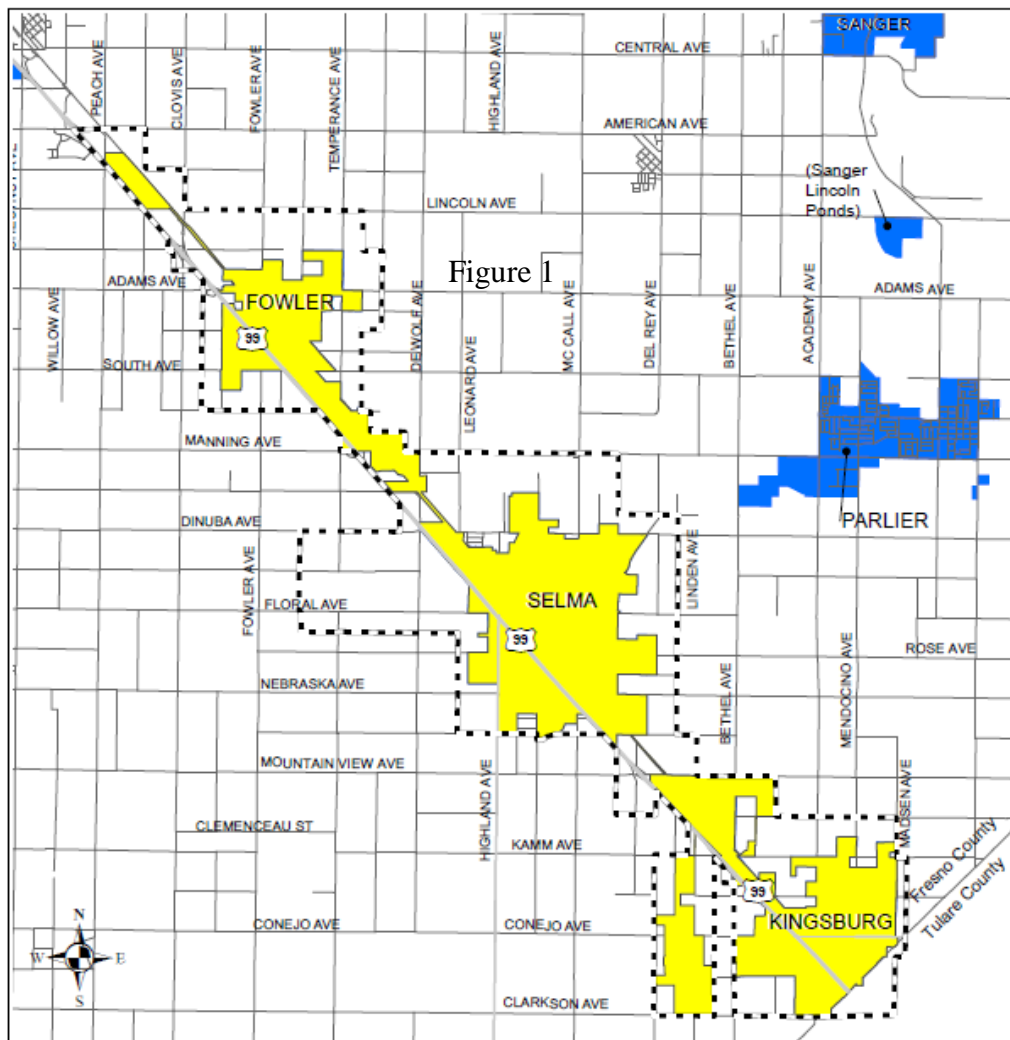
The District serves the three cities by agreements, under which it owns the large sewer lines, called interceptors, and the treatment-disposal facilities. Each city owns its sewer system while the District operates, maintains, and regulates them.

The services provided by the District are:

Collection - The sewer systems in each of the three cities drain the wastewater from homes, businesses, institutions and industries.

Treatment - Pollutants are removed at the plant by mechanical, biological and physical treatment.

Disposal - The treated wastewater, called effluent, is disposed of through a pond system. The treatment residual, called biosolids, are composed by a contractor.



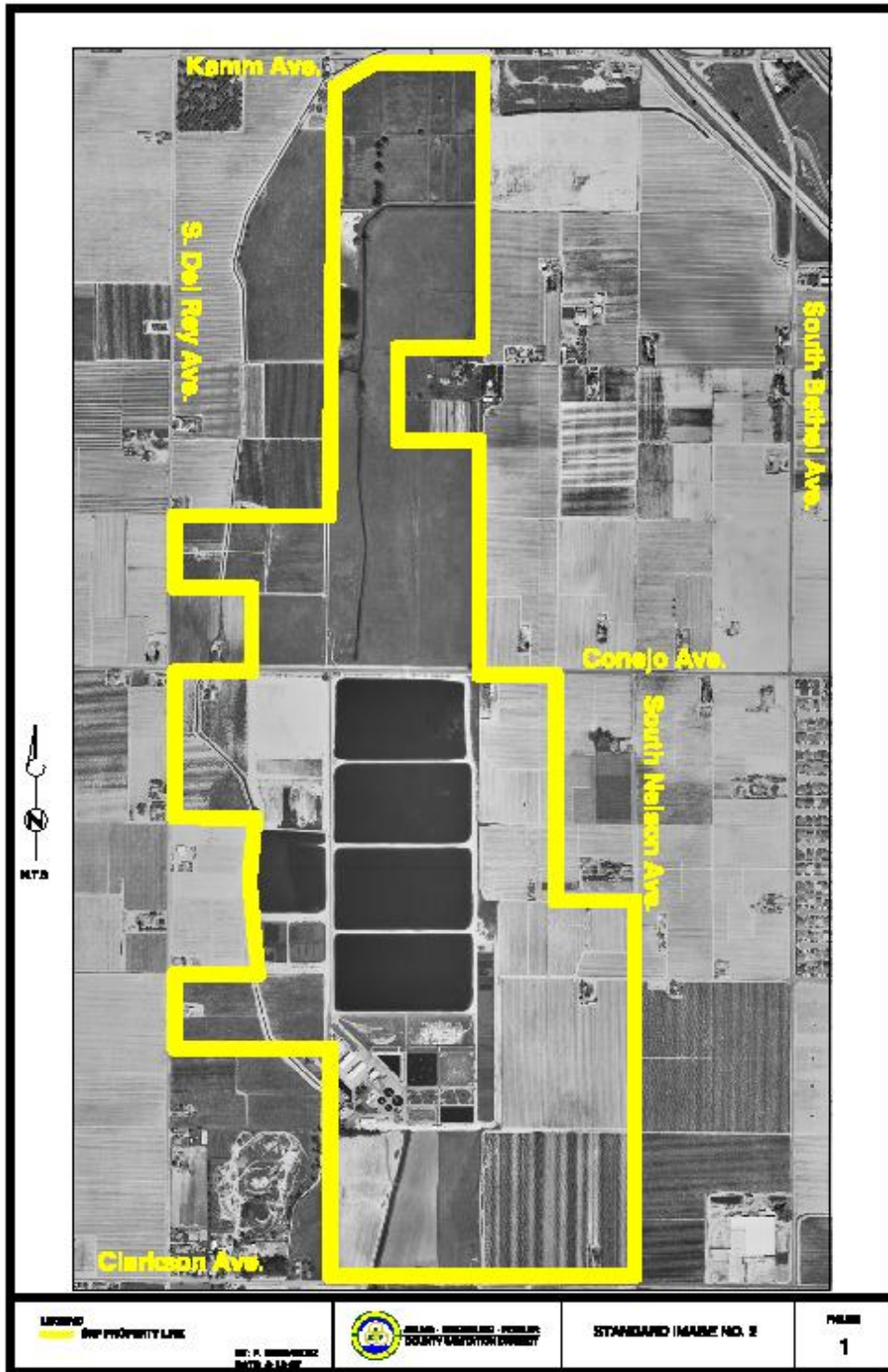
- District SOI
- District Service Area
- City Areas

District Formed: 1971
 SOI Adopted: 6/25/1975
 SOI Updated: 8/22/2007

Map Date: May 2016
 District Area: 7,173 Acres
 Sphere Area: 17,330 Acres

Appendix B

Wastewater Treatment and Disposal Facility



Appendix C

Organization Chart

